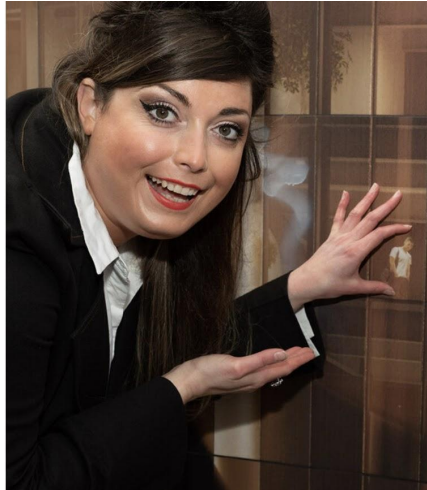


Heleyni Pratley's Housing Crisis Artwork calls for the public of Ponoke to be part of the art!

**'A WORK ABOUT THE HOUSING CRISIS WITH AN INDOOR OUTDOOR FLOW',
Launches from October 19th running through till Nov 12th.**



Social Change and public arts practitioner, Heleyni Pratley, invites the public of Ponoke to be part of the art in Heleyni's latest immersive work that intends to carve out a space in Wellington city, where the complexities of the housing crisis can be explored and feelings shared via collective art making, discussion, and reflection.

'A WORK ABOUT THE HOUSING CRISIS WITH AN INDOOR OUTDOOR FLOW', is proudly supported by Wellington City Council and Urban Dream Brokerage, and will be located within the Manners St vicinity, from October 19th till Nov 12th, open daily wednesday through Sunday, midday til 9pm. Full details [HERE](#)

Across the four week period, Heleyni aims to acknowledge community, love, grief, and hope by way of the indoor, the outdoor, and the flow. Audiences are invited to participate in the following ways:

Step 1: Enter the indoor 'Housing Crisis Community Reflection & Assessment Centre' where Pratley will invite you to participate in a video interview and share your thoughts, feelings, hopes, dreams and dilemmas about the housing crisis.

Step 2: Pratley will embody 'Flow' by curating, editing, and preparing the interviews into a looping video reel to be projected back at the community. 'Flow' is a housing design concept, in this case opening up the indoor centre and extending the reflections outside'

Step 3: The video work will then be projected via 'Flow' onto the outdoor 'Housing Bubble Sculpture'.

"My aim is to listen to the frustrations, hopes and dreams of the Wellington community. This is a chance for people to vent, to share experiences and learn how others are coping with the crisis".

Over the duration of the artwork, Pratley aims to engage as many people as possible.

“While we’ll be discussing the housing crisis and that can be a depressing and challenging topic, there’s also hope for change. This isn’t the first time in history we’ve had a housing crisis so I hope people leave feeling nourished, uplifted, and optimistic because we’ll be talking about solutions as well”

This work builds on Pratley’s past themes of community empowerment. Her recent works include ‘We Never Walk Alone Together’ on permanent display in Wellington Trades Hall Museum; and the performance video work ‘We Survive’ reflecting on the climate crisis and the state of the world pre-COVID-19.

Heleyni Pratley is a Pōneke based Aotearoa/Greek conceptual artist working in video, drawing, painting, sculpture, and performance. The core concepts of her work question the mechanics of our economic system and how it influences what we value. Alongside her art practice Pratley campaigns for social change, having worked as a Union organiser for fast food and Zero Hour contract workers. She is currently active in local housing and climate change movements.

Live updates via Facebook [HERE - www.facebook.com/Heleyni](https://www.facebook.com/Heleyni)

Members of the public can also book an interview in advance via email - interviewwithflow@gmail.com

www.urbandreambrokerage.org.nz

<https://www.urbandreambrokerage.org.nz/a-work-about-the-housing-crisis-with-an-indoor-outdoor-flow>

- ENDS -

FOR MEDIA ENQUIRIES:
Cheree Ridder - Publicist
Email: Chereeridder@gmail.com
Phone: 027577 3520

